

Instructions to Disable Fast User Switching for Windows Operating Systems – Windows XP, Vista, and 7



If you downloaded the secure browser before January 25, 2010, it requires that the Task Manager and Fast User Switching functions be disabled or the browser will not work. The secure browser available now does **not** require these functions to be disabled. However, the policy of the Hawaii Department of Education is that if a student can access multiple user accounts from a single computer, the Fast User Switching function **MUST** be disabled. Instructions on how to disable Fast User Switching follow.

How to Disable Fast User Switching in Windows XP

1. Click **Start**, Click **Control Panel**, then click on **User Accounts**



2. Click **Change the Way users log on or off**.
3. Ensure the **Use the Welcome Screen** option is checked.
4. Clear the check box for **Use Fast User Switching**.
5. Click **Apply Options**.

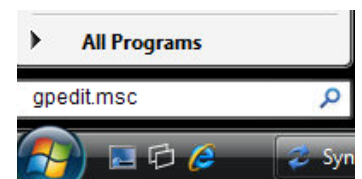


*Please note that Fast User Switching is not an option if joined to a domain.

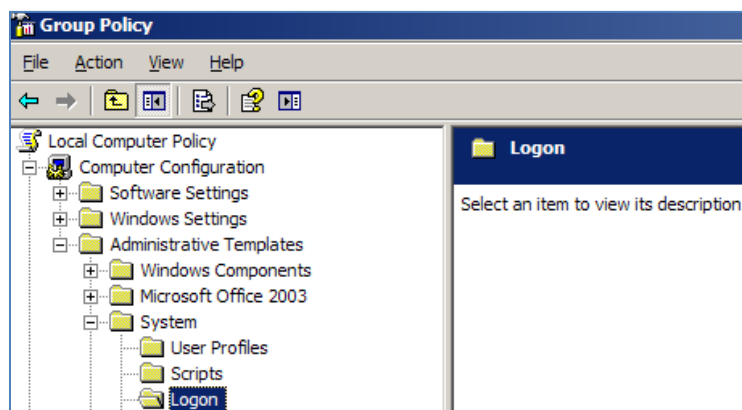
How to Disable Fast User Switching in Windows Vista or Windows 7

Method A: Access and open the Group Policy Editor

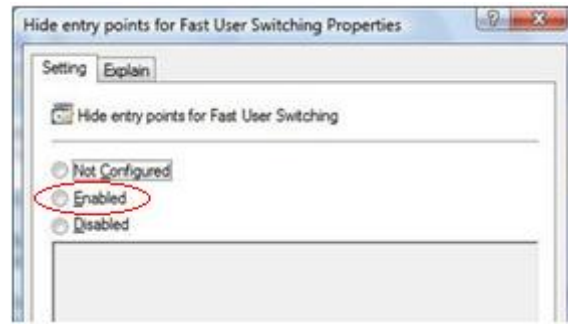
1. Click **Start**, type **gpedit.msc** in the **Start Search** dialog box and press **Enter**.
2. Navigate to the following location:



Local Computer Policy > Computer Configuration > Administrative Templates > System > Logon



3. Set **Hide entry points for Fast User Switching** to **Enabled**.



4. Close the Group Policy Editor window.

Note: Since the Group Policy Editor does not exist in certain editions of Windows Vista, you may need to configure these settings via the registry if the above method is unavailable. Also, this option is only available in Windows 7 if you are connected to a domain.

Method B: Edit the Registry

1. Click **Start**, type **regedit.exe** in the **Start Search** dialog box and press **Enter**.
2. Navigate to the following folder:

HKEY_LOCAL_MACHINE \ SOFTWARE \ Microsoft \ Windows \ CurrentVersion \ Policies \ System

3. Right-click on the **System** folder (*in the left pane*).
4. Click **New, DWORD (32-bit) value**.
5. Type in **HideFastUserSwitching** and press **Enter**.
6. Click on the **HideFastUserSwitching** value.
7. Type in **1** in the Value Data box (*see image on right*) and click **OK**.
8. Close the Registry Editor window.

